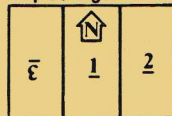


PanzerBlitz Situation #25

BLOCKING ACTION: MADONA SECTOR, LATVIA (22/9/44). The collapse of Army Group Center left AG North stranded in the Baltic states. As AG North withdrew into an enclave on the Courland peninsula, Russian spearheads reached out, attempting to split the Germans and defeat them in detail. The worst crisis came when the 2nd Baltic Front smashed the German 10th Corps at Madona; a short dash to Riga and the whole evacuation from Estonia and Latvia would be intercepted.

Map Configuration



RUSSIAN FORCES



A spearhead of the 3rd Shock Army enters on Eastern edge.

5 I 4 16 BTR 146 1	7 A 3 3 14 0	8 I 1 12 SRS 181 1	3 M 12 8 1 1	24 M 20 2 176 01 0	3 H 10 7 2 0	3 I 2 8 112 1	0 C 0 1 TRUCK 428 12
9	3	6	6	3	2	2	17

40 H 20 1 122 72 0	14 A 8 12 18 86 822 11	40 H 10 16 58 762 741 7	15 A 8 10 134 76 961 11	18 A 8 12 21 911 8	0 - 0 1 201 0	2 C(I) 1 2 441 444 10
2	2	2	6	2	2	6



GERMAN FORCES



A battle group of the Nordland Division enters first on West edge of board.

16 A 12 12 263 10	14 A 8 8 194 195 8	12 A 8 12 76 81 874 8	3 I 6 8 1 BTR 146 1	6 I 3 1 6 183 1	20 A 20 6 848 850 8	40 H 32 5 621 8	60 H 24 6 631 8
9	9	3	16	4	1	1	1

2 H 4 3 531 16	20 A 20 1 42 0	2 C(I) 4 4 445 10	0 C 0 1 TRUCK 424 12
3	2	10	12

VICTORY CONDITIONS:

Award each side 1 point for every enemy unit destroyed. Award the Russians 2 points for each unit moved off the Western edge of the map. Side with the most points wins.

Ger.
moves first
Turn

1

2

3

4

5

6

7

8

9

10

END

11