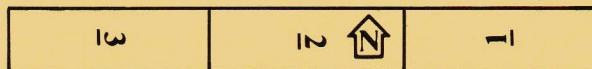


PanzerBlitz Situation #6

GERMAN MOBILE DEFENSE OF POSITION: ACTION WEST OF DNEIPER RIVER DURING GERMAN RETREAT FROM DNEIPER BEND (28/11/43). Even during momentary "quiet" spells the Russians would launch minor probes which were usually met by an elastic German "mobile defense."



Map Configuration

★ RUSSIAN FORCES



19th Tank Corps. Set up on No. 1 board. Must be within 10 hexes of east edge.

12 A 6 9 935 11 x12	8 I 1 12 SMC 182 1 x6	3 I 1 4 RECON 135 1 x2	7 A 3 3 45 mm 14 0 x2	12 A 5 2 76.2 mm 33 0 x2	14 A 8 12 SU 85 821 11 x2	40 H 10 16 SU 152 742 7 x2	2 C(I) 1 2 HALFTRK 445 10 x2
---------------------------	-----------------------------	------------------------------	-----------------------------	--------------------------------	---------------------------------	----------------------------------	------------------------------------

0 C 0 1 TRUCK 433 12

x10

VICTORY CONDITIONS:

Marginal = Have 10 units on No. 3 board at end of game. Tactical = 20 units on No. 3 board. Decisive = 30 units on No. 3 board.

✚ GERMAN FORCES



Battle Group from the 24th Pz Div (elements of 24th Pz Rgt, 26th PG Rgt, 40th AT Bn, 283 Flak Bn). Set up after Russians, on the No. 2 board.

14 A 8 8 Panther IV 938 8 x2	16 A 12 12 PANTH 956 10 x2	3 I 6 8 RIFLE 152 1 x3	15 M 20 2 120 mm 93 0	16 A 12 9 JgdPr. IV 840 8 x2	13 A 6 2 75 mm 33 0	20 A 20 1 88 mm 41 0	14 H 10 1 204 mm 53 0
------------------------------------	----------------------------------	------------------------------	--------------------------	------------------------------------	------------------------	-------------------------	--------------------------

40 H 32 5 WESPE 623 8	60 H 24 6 HUNDEL 631 8	0 C 0 1 CP 201 0
--------------------------	---------------------------	---------------------

2 C(I) 4 4 HALFTRK 449 10

x8

VICTORY CONDITIONS:

Marginal = destroy as many Russian units as are lost but not more than twice as many. Tactical = destroy twice as many but not three times as many units. Decisive = Destroy three times as many units as lost.

Ger moves first											
Turn 1	2	3	4	5	6	7	8	9	10	END	